

West Woodland Elementary School – Classroom Addition

Seattle Public Schools

1821.00-6

Meeting Minutes

SDAT Meeting 02

Prepared by: Mitch Kent

March 20, 1:30 PM

Attendees:

■ Farah Thaxton (FT)	WWES	■ Jill Farbarik (JB)	WWES
■ Brian Langley (BL)	WWES	■ Marie Sumpter (MS)	WWES
■ Katie Barrett (KB)	WWES	■ Paula Wittmann (PW)	WWES
■ Wynne York-Jones (WYJ)	WWES	■ Nicole Selstead (NS)	WWES
■ Ashley McClaran (AM)	WWES	■ Melissa Winchester (MW)	KIDSinc
□ Mike Skutack (MS)	SPS	■ Paul Wight (PW)	SPS
□ Michael McGavock (MM)	mcg-ARC	■ Mitch Kent (MK)	mcg-ARC
■ Matthew Bissen (MB)	mcg-ARC	■ Ben Fields (BF)	mcg-ARC

ITEMS DISCUSSED

I. INTRODUCTION

II. ACTIVITY

A. Characteristics of High-Quality Learning Environments - Photo Safari Discussion

1. Group discussed the photos which the group brought to the meeting and how they could inform District and West Woodland goals and criteria for High Quality, Student-Centered Learning. The group were give green and yellow dots to highlight which images represented strong (green) space and environment characteristics or questionable (yellow) spaces. (see attached)

2. Themes Emerging

Natural light / Adaptable & Collaborative Spaces / Dynamic Spaces / Effective storage / Flexible and Variety of space types / Visibility / Organic and Art Infused / Places to recharge

B. Goals & Vision

1. Group discussed “What Works / What Doesn’t Work” at West Woodland.

Themes Emerging

Site:

Working – Views / Play and Types of Play Areas / Community Connection & Access

Challenges – Access, Drop Off & Traffic Flows / Not Welcoming / Visibility at Entry / Size

Building:

Working – Art work and energy / Cheerful hallways / Welcoming / Classrooms / Grade proximity

Challenges – Lighting & Daylight / Storage / Size / Entry sequence & Security / Lack of smaller learning & break out spaces / Commons functionality / Bathrooms / Hallway congestion & acoustics. / Lack of clear parent or community spaces.

West Woodland Elementary School – Classroom Addition

Seattle Public Schools

1821.00-6

2. Group discussed “What are the meaningful learning experiences you desire for West Woodland students?”

Themes Emerging

Feeling Connected / Access to different learning / Having Ownership / Equity / Feeling Worth / Learning by Doing / Comfort & Safe / Environmental Responsibility

3. Group discussed “What are the activities that support these student experiences?”

Themes Emerging

Performances – Class Based, Low Stakes, Great Stage / Hands on Learning Stations / Place to get dirty / Play – Small & Large Scale / Food – Visible Connection / Appropriate space and scale for learning / Computer Access / Art infused – making – performance – literacy through art.

III. LEARNING ENVIRONMENTS

1. Did not cover due to time.

IV. HOMEWORK

1. Confirmed School Tour Date and Time.
2. District will provide bus transportation & Lunch
3. Preparation Work – Be prepared to be a keen observer, reflect on what we see, and be present and ready to share.

V. THE MEETING WAS ADJOURNED AT 3:00 PM. NEXT MEETING WILL BE ON WEDNESDAY, 4/3 STARTING AT 8:45 AM.

- Learner centered
- adaptability
- collaboration



Seattle Public Schools – West Woodland Elementary School

Re: SDAT Workshop 01

Date: 6 March 2019 (due 20 March 2019)

PHOTO SAFARI

Reflecting on the “Attributes of High Achieving Schools” and Powerful Learning Models

- Seek out examples of (3) places of powerful learning, preferably in our region, that are NOT schools
- Images from any source – web, smartphone, magazines that capture aspects of the “Attributes”.
- Print and attach the image to the provided handout and tag each image with one or more of the appropriate attributes.



https://res-5.cloudinary.com/the-university-of-melbourne/image/upload/s--vTEu1sPR--/c_limit,f_auto,q_75,w_892/v1/pursuit-uploads/09c/35e/a9a/09c35ea9ae0bd7f823bd2672bb58ae17aaaboaf3ae058a1730fd532b3f01.jpg

Attribute(s):	Different learning areas, - flexibility
	separate but integrated area with sliding glass doors – separate but united teaching areas
	Natural light, but also spaces that look like they can be darkened.

Seattle Public Schools – West Woodland Elementary School

Re: SDAT Workshop 01

Date: 6 March 2019 (due 20 March 2019)



PHOTO SAFARI

Reflecting on the “Attributes of High Achieving Schools” and Powerful Learning Moments...

- Seek out examples of (3) places of powerful learning, preferably in our region, that are NOT schools
- Images from any source – web, smartphone, magazines that capture aspects of the “Attributes”.
- Print and attach the image to the provided handout and tag each image with one or more of the appropriate attributes.



<https://www.builddirect.com/learning-center/wp-content/uploads/2017/05/Reading-nook-and-window.jpg>

Attribute(s):	Place to recharge, calming- place for introverts be at home
	Useful storage built in
	View of nature

Seattle Public Schools – West Woodland Elementary School

Re: SDAT Workshop 01

Date: 6 March 2019 (due 20 March 2019)

PHOTO SAFARI

Reflecting on the “Attributes of High Achieving Schools” and Powerful Learning Moments...

- Seek out examples of (3) places of powerful learning, preferably in our region, that are NOT schools
- Images from any source – web, smartphone, magazines that capture aspects of the “Attributes”.
- Print and attach the image to the provided handout and tag each image with one or more of the appropriate attributes.



Attribute(s):	Building design, Compact site, major utility challenges, difficult construction site

Seattle Public Schools – West Woodland Elementary School

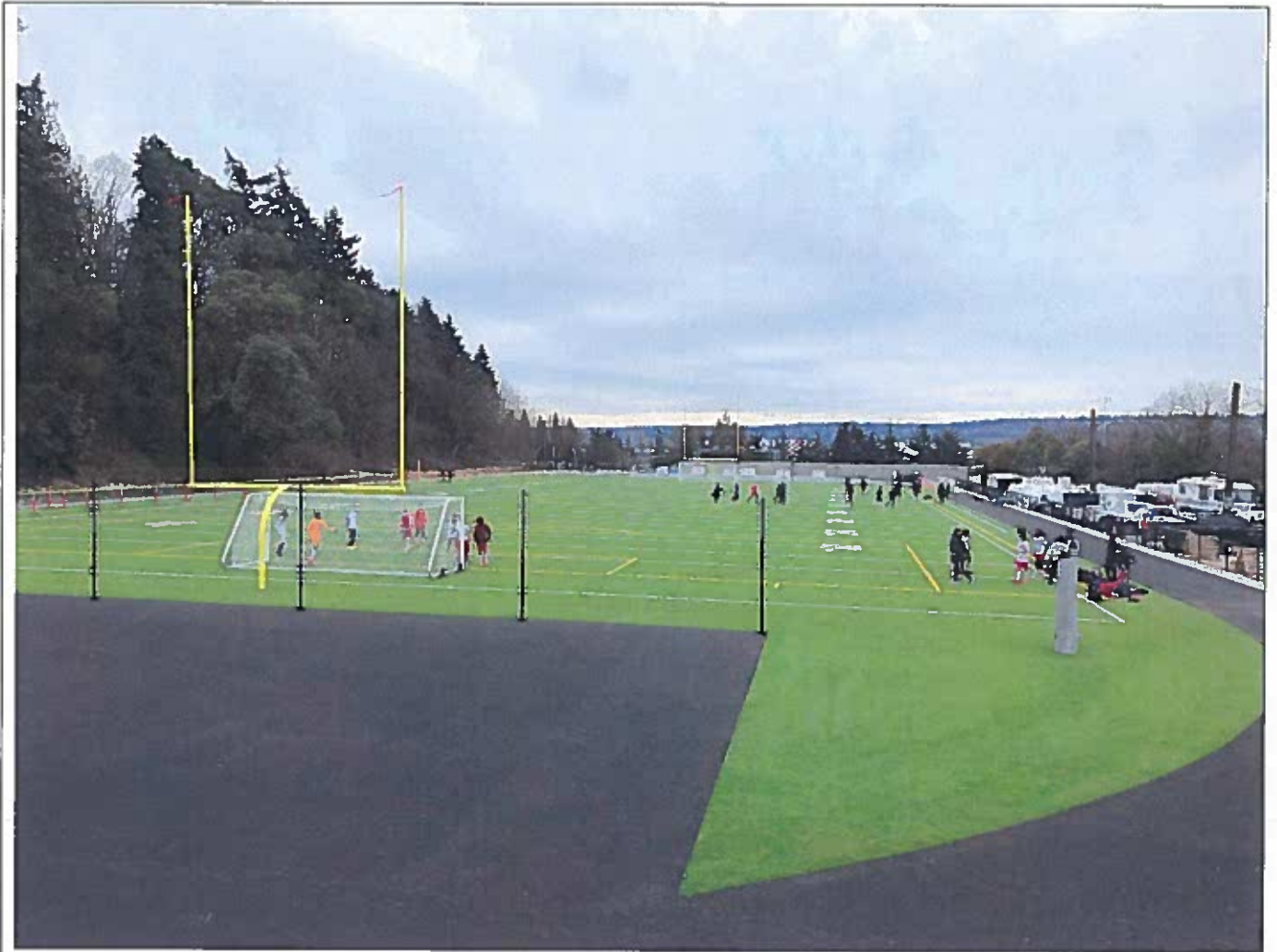
Re: SDAT Workshop 01

Date: 6 March 2019 (due 20 March 2019)

PHOTO SAFARI

Reflecting on the “Attributes of High Achieving Schools” and Powerful Learning Moments...

- Seek out examples of (3) places of powerful learning, preferably in our region, that are NOT schools
- Images from any source – web, smartphone, magazines that capture aspects of the “Attributes”.
- Print and attach the image to the provided handout and tag each image with one or more of the appropriate attributes.



Attribute(s):	Team Building Friendships, Comradery
	Competition Memories
	Health Life lessons

Seattle Public Schools – West Woodland Elementary School

Re: SDAT Workshop 01

Date: 6 March 2019 (due 20 March 2019)

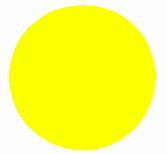


PHOTO SAFARI

Reflecting on the “Attributes of High Achieving Schools” and Powerful Learning Moments...

- Seek out examples of (3) places of powerful learning, preferably in our region, that are NOT schools
- Images from any source – web, smartphone, magazines that capture aspects of the “Attributes”.
- Print and attach the image to the provided handout and tag each image with one or more of the appropriate attributes.



Attribute(s):

Historic Learning Environment

Building Design – Lots of day light, Open space, Green building technology



- learner centered
- adaptability

PHOTO SAFARI

Reflecting on the “Attributes of High Achieving Schools” and Powerful Learning Moments...

- Seek out examples of (3) places of powerful learning, preferably in our region, that are NOT schools
- Images from any source – web, smartphone, magazines that capture aspects of the “Attributes”.
- Print and attach the image to the provided handout and tag each image with one or more of the appropriate attributes.



Attribute(s):

Personalizing Environment

Aesthetics

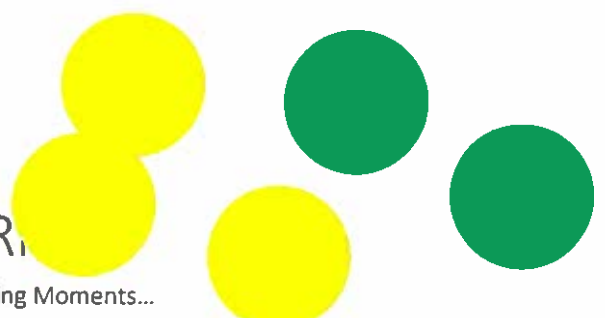


PHOTO SAFARI

Reflecting on the “Attributes of High Achieving Schools” and Powerful Learning Moments...

- Seek out examples of (3) places of powerful learning, preferably in our region, that are NOT schools
- Images from any source – web, smartphone, magazines that capture aspects of the “Attributes”.
- Print and attach the image to the provided handout and tag each image with one or more of the appropriate attributes.



Attribute(s):	Plants plants plants and natural light

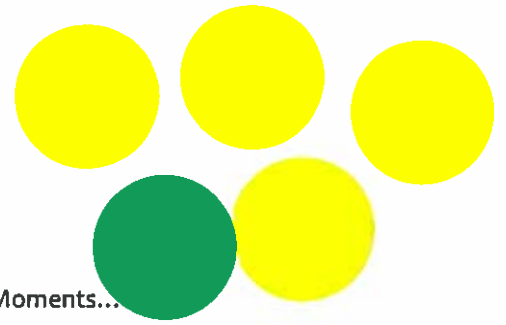


PHOTO SAFARI

Reflecting on the “Attributes of High Achieving Schools” and Powerful Learning Moments...

- Seek out examples of (3) places of powerful learning, preferably in our region, that are NOT schools
- Images from any source – web, smartphone, magazines that capture aspects of the “Attributes”.
- Print and attach the image to the provided handout and tag each image with one or more of the appropriate attributes.



Attribute(s):

Bring The outside in
(May not feel as if missing the
day so could work longer.)

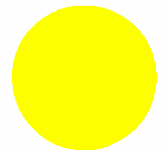
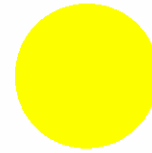
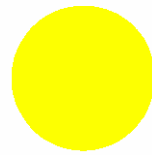


PHOTO SAFARI

Reflecting on the “Attributes of High Achieving Schools” and Powerful Learning Moments...

- Seek out examples of (3) places of powerful learning, preferably in our region, that are NOT schools
- Images from any source – web, smartphone, magazines that capture aspects of the “Attributes”.
- Print and attach the image to the provided handout and tag each image with one or more of the appropriate attributes.



Attribute(s):

- 1) organic
- 2) artistic
- 3) interesting

PHOTO SAFARI

Reflecting on the “Attributes of High Achieving Schools” and Powerful Learning Moments...

- Seek out examples of (3) places of powerful learning, preferably in our region, that are NOT schools
- Images from any source – web, smartphone, magazines that capture aspects of the “Attributes”.
- Print and attach the image to the provided handout and tag each image with one or more of the appropriate attributes.



Attribute(s):

1) Natural light

2) Fans - possible white noise

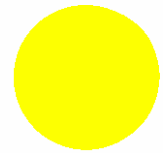


PHOTO SAFARI

Reflecting on the “Attributes of High Achieving Schools” and Powerful Learning Moments...

- Seek out examples of (3) places of powerful learning, preferably in our region, that are NOT schools
- Images from any source – web, smartphone, magazines that capture aspects of the “Attributes”.
- Print and attach the image to the provided handout and tag each image with one or more of the appropriate attributes.



Attribute(s):

natural light

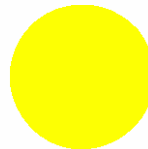
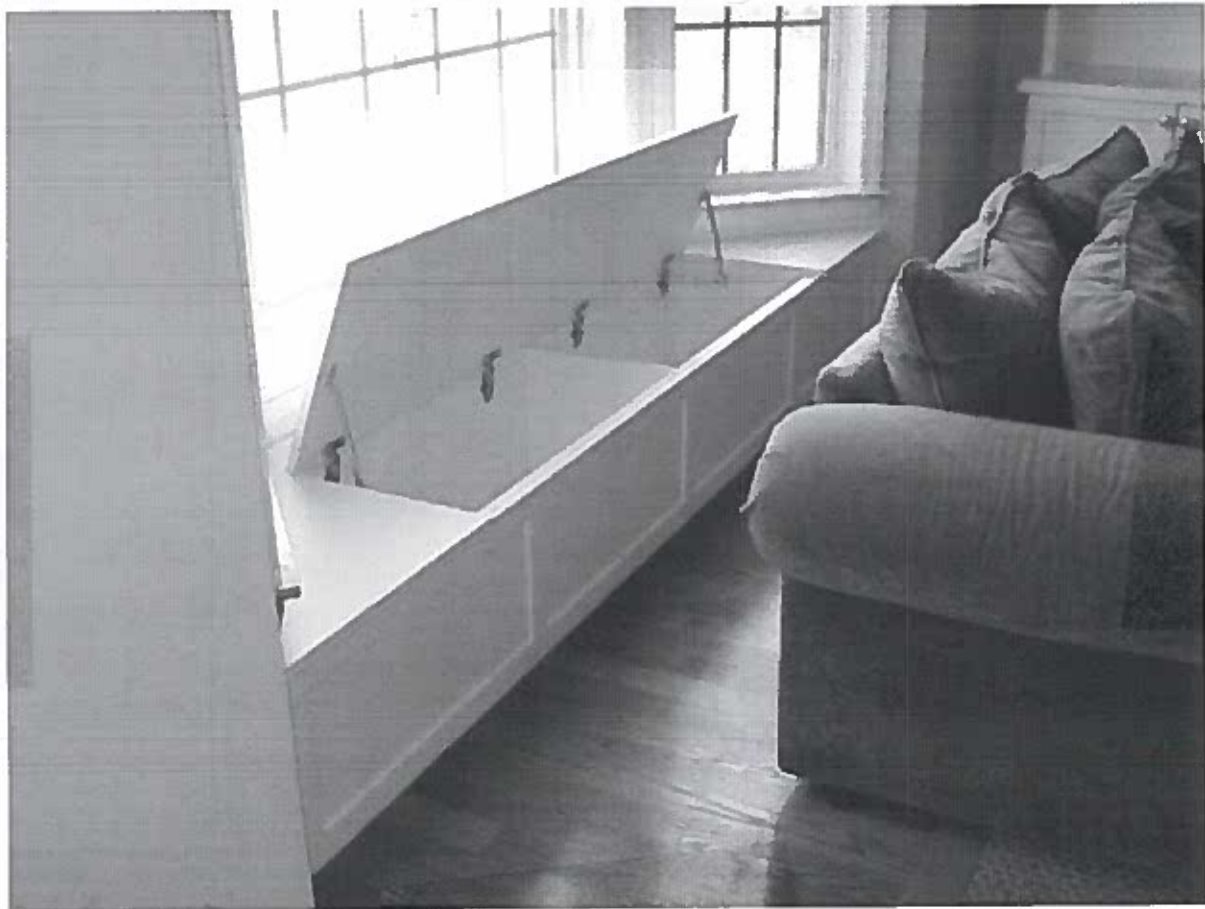


PHOTO SAFARI

Reflecting on the “Attributes of High Achieving Schools” and Powerful Learning Moments...

- Seek out examples of (3) places of powerful learning, preferably in our region, that are NOT schools
- Images from any source – web, smartphone, magazines that capture aspects of the “Attributes”.
- Print and attach the image to the provided handout and tag each image with one or more of the appropriate attributes.



Attribute(s):

hidden storage / dual purpose
space

PHOTO SAFARI

Reflecting on the “Attributes of High Achieving Schools” and Powerful Learning Moments...

- Seek out examples of (3) places of powerful learning, preferably in our region, that are NOT schools
- Images from any source – web, smartphone, magazines that capture aspects of the “Attributes”.
- Print and attach the image to the provided handout and tag each image with one or more of the appropriate attributes



Attribute(s):	Functional
	light

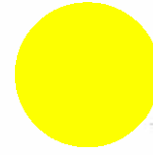


PHOTO SAFARI

Reflecting on the “Attributes of High Achieving Schools” and Powerful Learning Moments...

- Seek out examples of (3) places of powerful learning, preferably in our region, that are NOT schools
- Images from any source – web, smartphone, magazines that capture aspects of the “Attributes”.
- Print and attach the image to the provided handout and tag each image with one or more of the appropriate attributes.



Attribute(s):

Learner-Centered Environment
Aesthetics



- 1) organic
- 2) strong
- 3) looks fun





PHOTO SAFARI

Reflecting on the “Attributes of High Achieving Schools” and Powerful Learning Moments...

- Seek out examples of (3) places of powerful learning, preferably in our region, that are NOT schools
- Images from any source – web, smartphone, magazines that capture aspects of the “Attributes”.
- Print and attach the image to the provided handout and tag each image with one or more of the appropriate attributes.



Attribute(s):

LIGHT, WARMTH
MULTI USE SPACE,
CAFFEINE

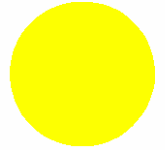
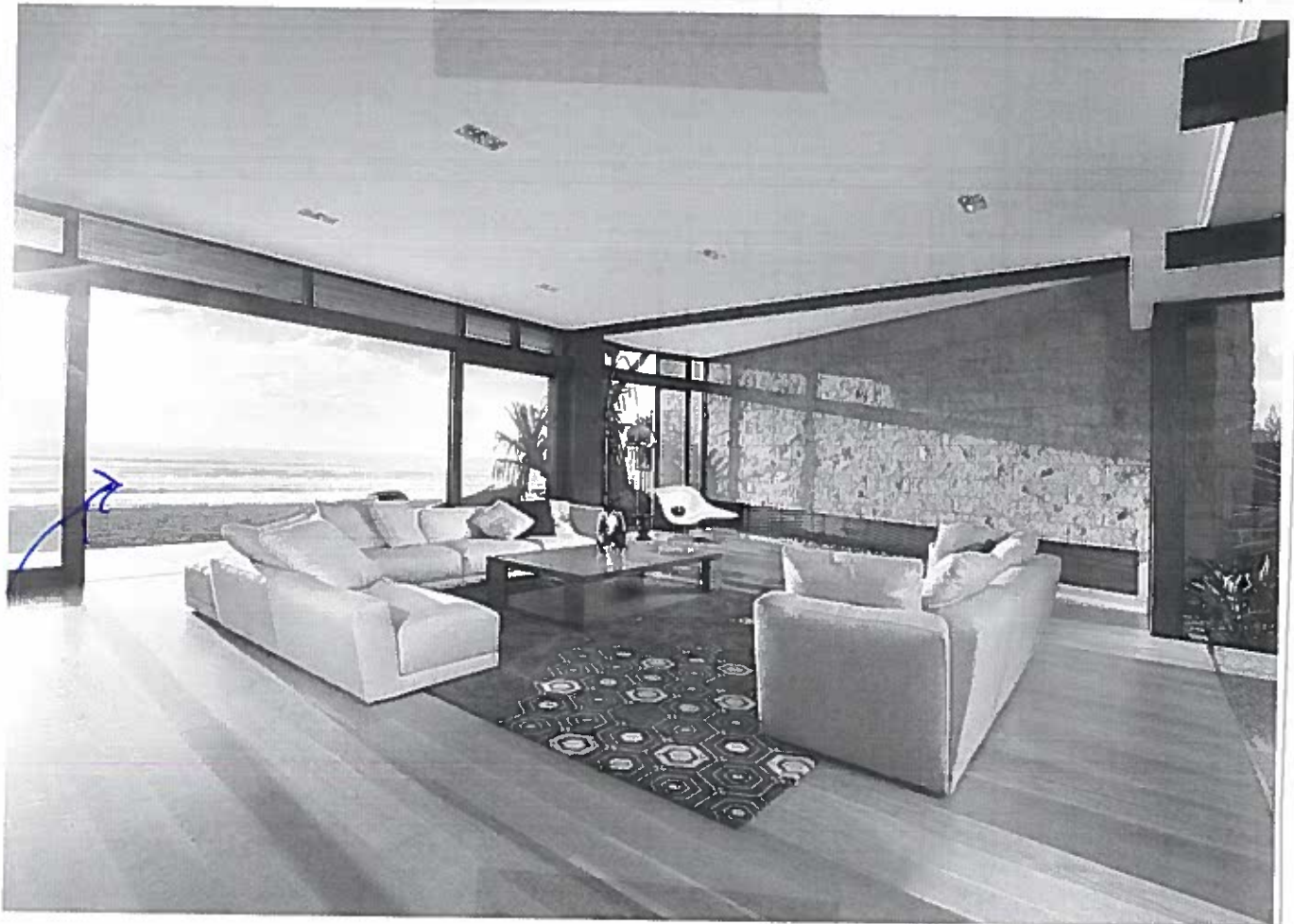


PHOTO SAFARI

Reflecting on the “Attributes of High Achieving Schools” and Powerful Learning Moments...

- Seek out examples of (3) places of powerful learning, preferably in our region, that are NOT schools
- Images from any source – web, smartphone, magazines that capture aspects of the “Attributes”.
- Print and attach the image to the provided handout and tag each image with one or more of the appropriate attributes.



Attribute(s):

Room expansions to combine space when needed

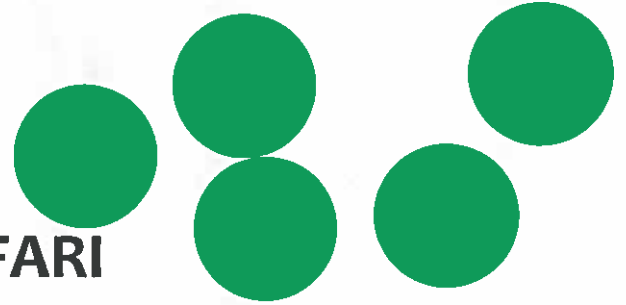
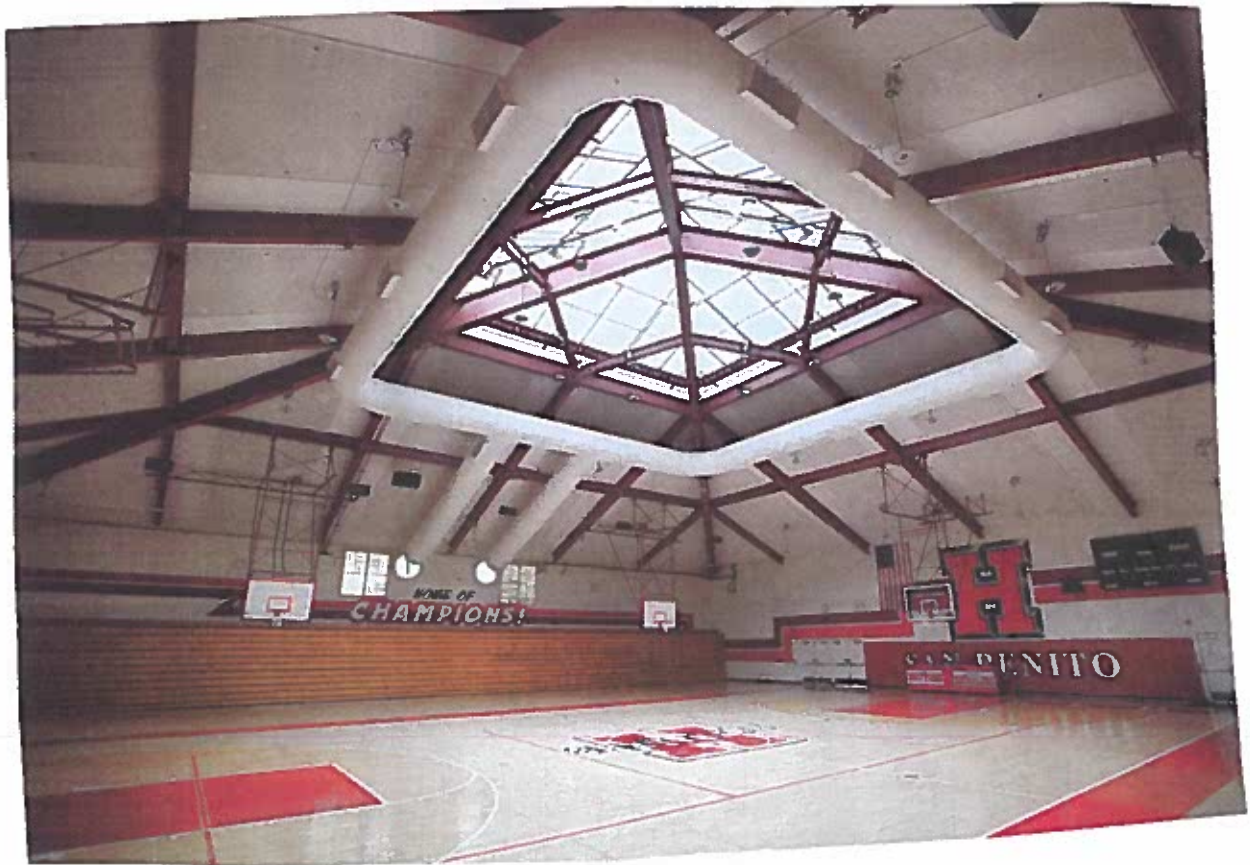


PHOTO SAFARI

Reflecting on the “Attributes of High Achieving Schools” and Powerful Learning Moments...

- Seek out examples of (3) places of powerful learning, preferably in our region, that are NOT schools
- Images from any source – web, smartphone, magazines that capture aspects of the “Attributes”.
- Print and attach the image to the provided handout and tag each image with one or more of the appropriate attributes.



Attribute(s):

1) Makes you feel mighty in a space where you may be physically challenged.

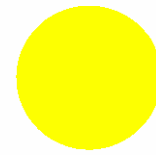
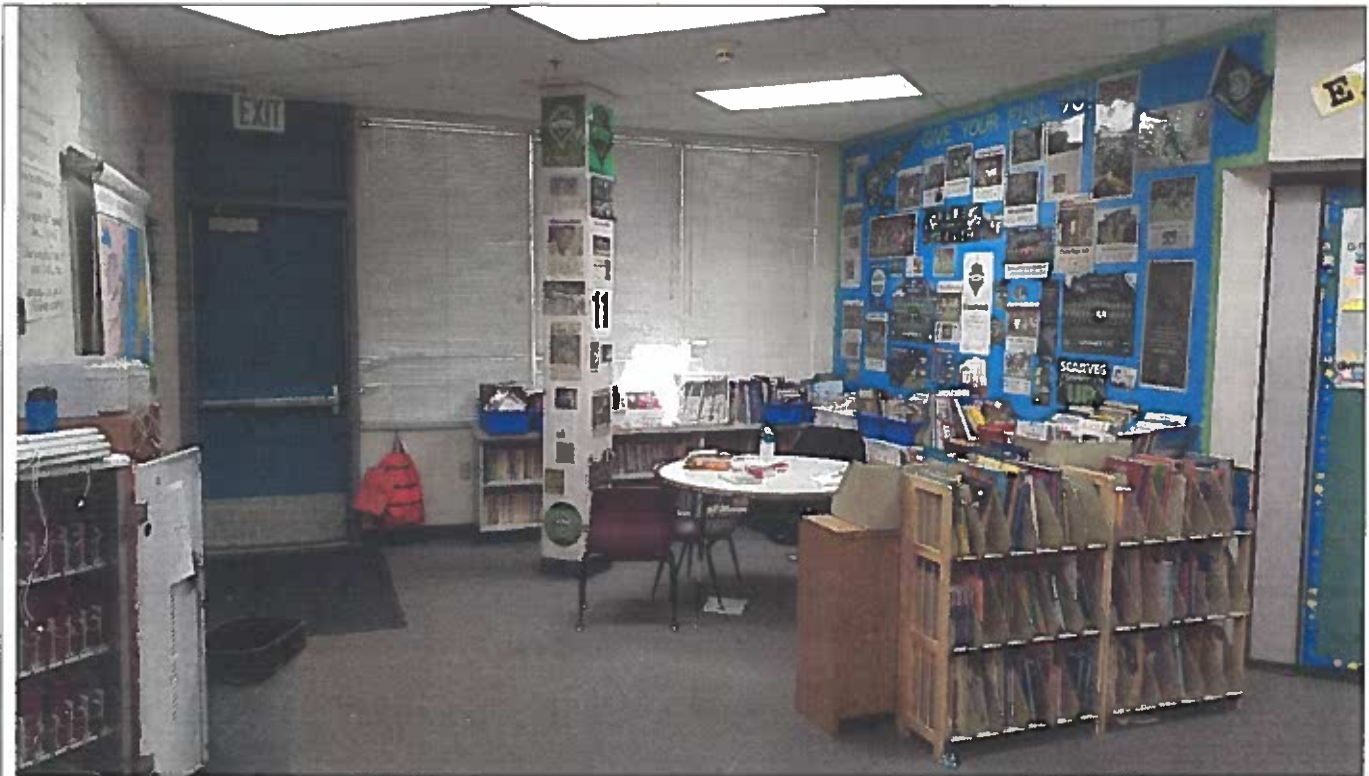


PHOTO SAFARI

Reflecting on the “Attributes of High Achieving Schools” and Powerful Learning Moments...

- Seek out examples of (3) places of powerful learning, preferably in our region, that are NOT schools
- Images from any source – web, smartphone, magazines that capture aspects of the “Attributes”.
- Print and attach the image to the provided handout and tag each image with one or more of the appropriate attributes.



Attribute(s):

Flexible seating. ~~Standing height work space~~. Allows for movement.

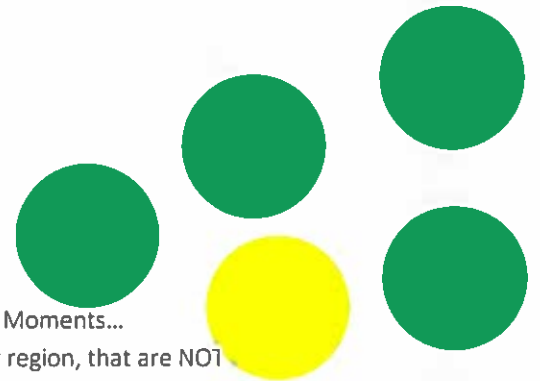
Different space. Usable for various activities

Seattle Public Schools – West Woodland Elementary School

Re: SDAT Workshop 01

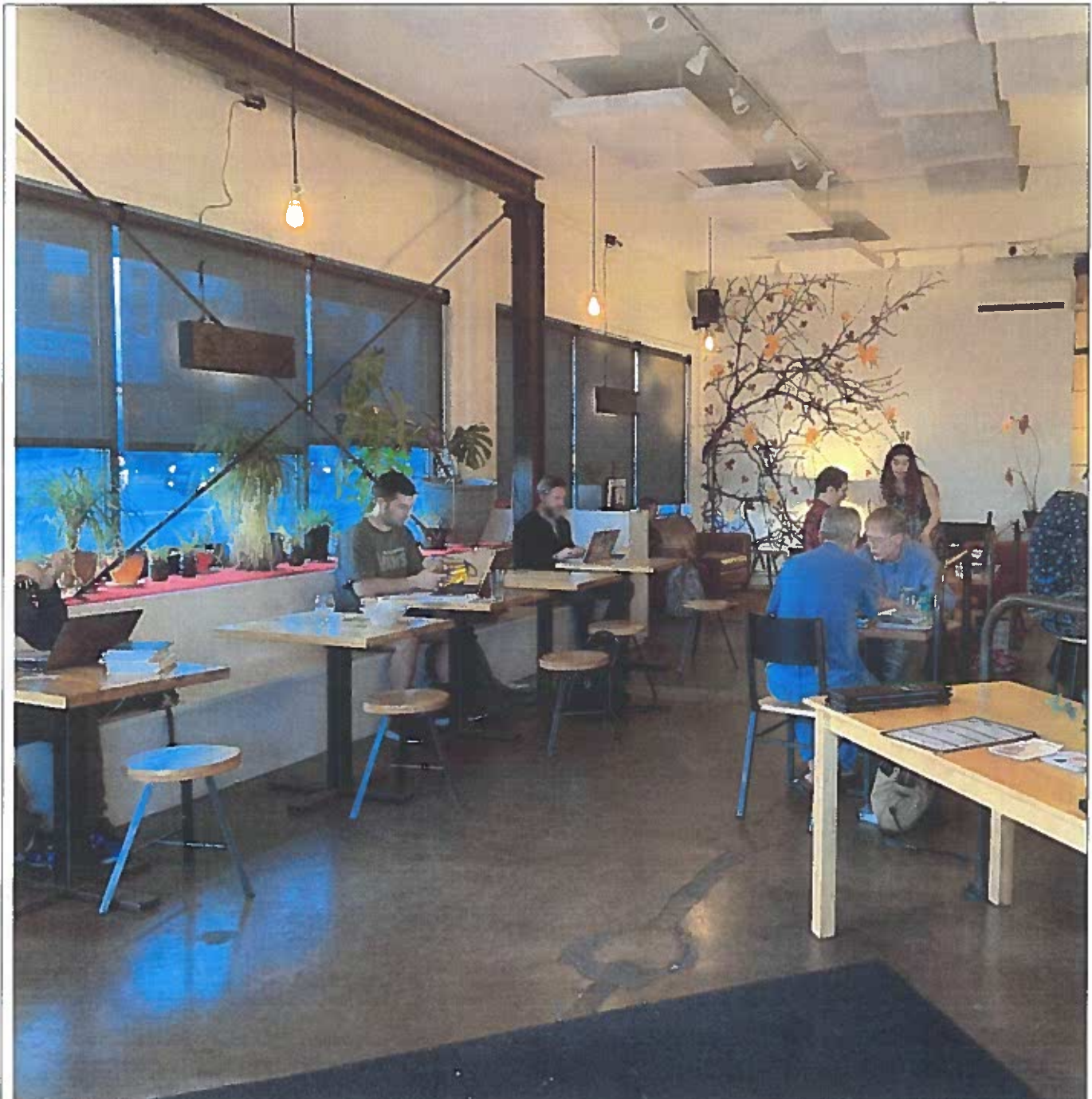
Date: 6 March 2019 (due 20 March 2019)

PHOTO SAFARI



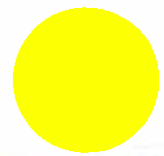
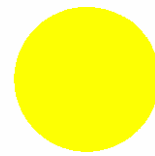
Reflecting on the “Attributes of High Achieving Schools” and Powerful Learning Moments...

- Seek out examples of (3) places of powerful learning, preferably in our region, that are NOT
- Images from any source – web, smartphone, magazines that capture aspects of the “Attributes”.
- Print and attach the image to the provided handout and tag each image with one or more of the appropriate attributes.



Attribute(s):

Variety of seating options- bar, table, comfy, facing each other, next to each other. Lots of natural light.



<p>Attribute(s):</p>	<p>Ceiling tiles for sound absorption Lots of light</p>
----------------------	---

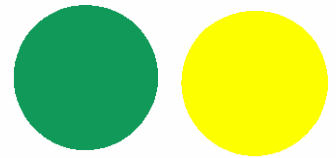


PHOTO SAFARI

Reflecting on the “Attributes of High Achieving Schools” and Powerful Learning Moments...

- Seek out examples of (3) places of powerful learning, preferably in our region, that are NOT schools
- Images from any source – web, smartphone, magazines that capture aspects of the “Attributes”.
- Print and attach the image to the provided handout and tag each image with one or more of the appropriate attributes.



https://www.google.com/url?sa=i&source=imgres&cd=&cad=rja&uact=8&ved=2ahUKEwj318XBn4zhAhXM3J4KHRt1C9UQjRx6BAGBEAU&url=https%3A%2F%2Farchitectureau.com%2Farticles%2F2017-inaugural-alia-australian-library-design-awards-shortlist%2F&psig=AOvVaw2y3abcy5aMSQm_A_f6RDTL&ust=1553017594116189

Attribute(s):

Multi-purpose – teaching and relaxing

warm

Fluid lines.

PHOTO SAFARI

Reflecting on the “Attributes of High Achieving Schools” and Powerful Learning Moments...

- Seek out examples of (3) places of powerful learning, preferably in our region, that are NOT schools
- Images from any source – web, smartphone, magazines that capture aspects of the “Attributes”.
- Print and attach the image to the provided handout and tag each image with one or more of the appropriate attributes.



Attribute(s):	Flexible seating. Standing height work space. Allows for movement.
	Different space. Usable for various activities

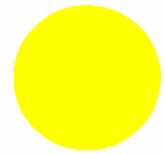


PHOTO SAFARI

Reflecting on the “Attributes of High Achieving Schools” and Powerful Learning Moments...

- Seek out examples of (3) places of powerful learning, preferably in our region, that are NOT schools
- Images from any source – web, smartphone, magazines that capture aspects of the “Attributes”.
- Print and attach the image to the provided handout and tag each image with one or more of the appropriate attributes.



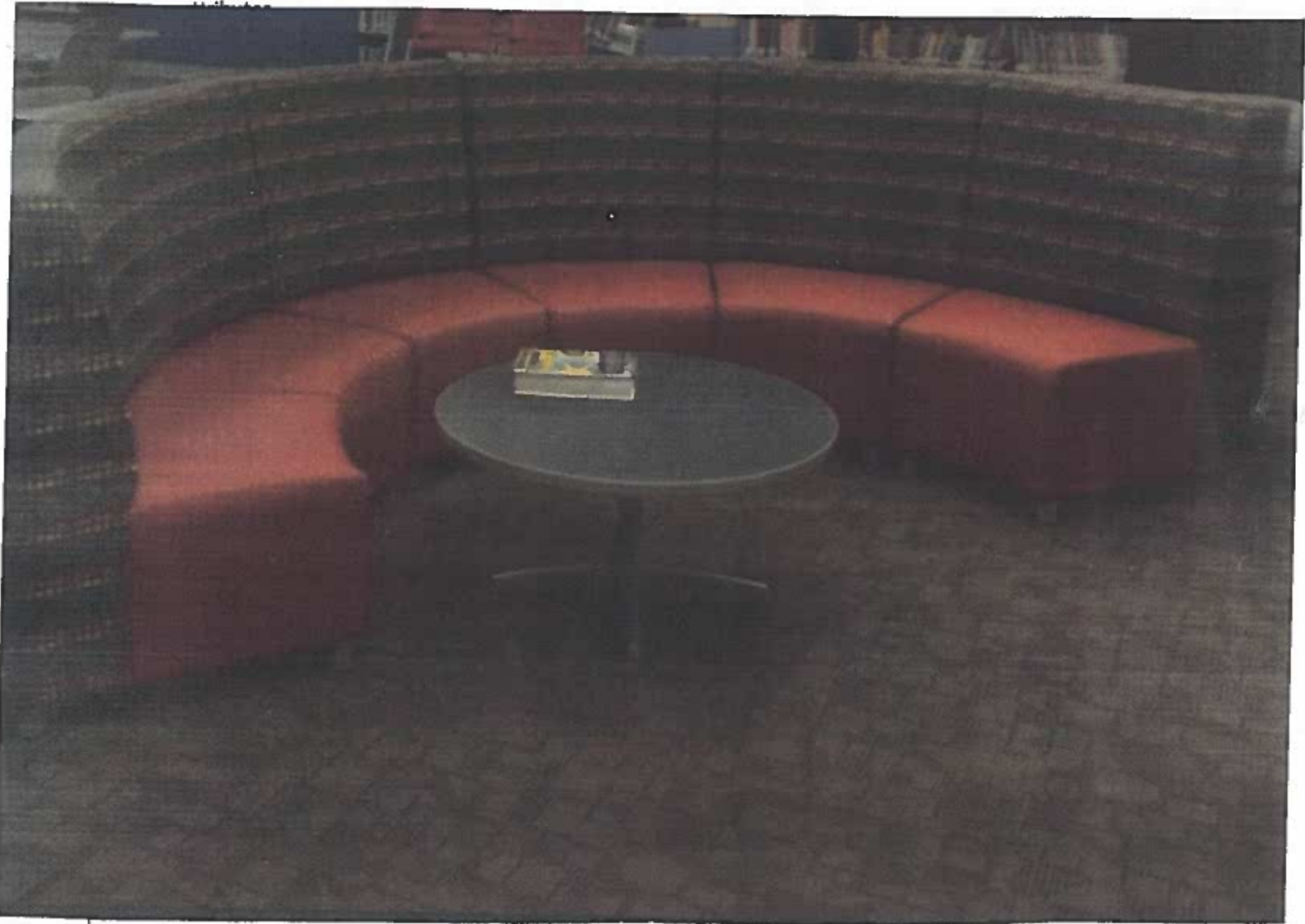
Attribute(s):	Collaboration
	Safety (trusting adults)



PHOTO SAFARI

Reflecting on the “Attributes of High Achieving Schools” and Powerful Learning Moments...

- Seek out examples of (3) places of powerful learning, preferably in our region, that are NOT schools
- Images from any source – web, smartphone, magazines that capture aspects of the “Attributes”.
- Print and attach the image to the provided handout and tag each image with one or more of the appropriate



Attribute(s):	1) Semi-private in a public space
	2) Inviting
	3) Curves are soothing